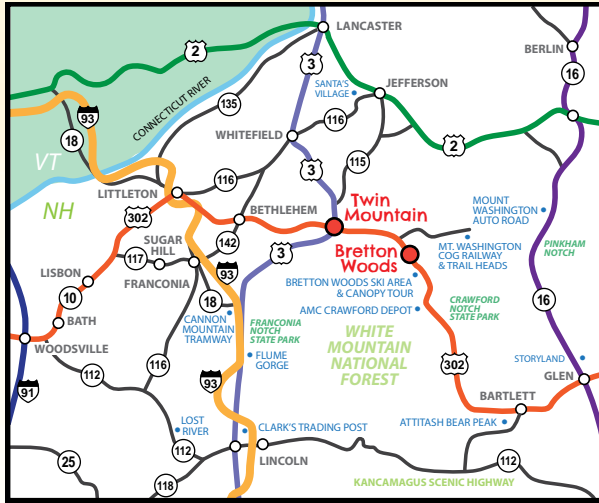


TWIN MOUNTAIN BRETTON WOODS



NEARBY ATTRACTIONS

Mount Washington Cog Railway • Bretton Woods
Ski Area, Adventure Center, and Canopy Tour
Clark's Bears • Mt. Washington Auto Road
HammerDown Adventures • Vertical Ventures Aviation
Lost River • Santa's Village • Story Land • Flume Gorge
Cannon Mountain Tramway and Ski Area

Surrounded by WHITE MOUNTAIN NATIONAL FOREST

Where you can enjoy... Hiking and Mountain Climbing,
Kayaking and Canoeing, Cycling and Mountain
Biking, Fishing and Hunting, Horseback Riding, Scenic
Drives and Waterfalls, Bird and Wildlife Watching,
Ziplines, Backcountry Skiing, Snowshoeing, Snowmobiling

DRIVING TIMES

Boston, MA 3 hrs.	Montreal, CN 3 hrs.
Concord, NH 1.5 hrs.	Portland, ME 2 hrs.
Hartford, CT 5 hrs.	Providence, RI 4 hrs.



All information is subject to change. Please call or visit property websites for updates.

Photo credits: Thanks to our members, especially AMC, Omni Mount Washington Resort, The Rocks Estate, Mount Washington Cog Railway, and Clark's Trading Post.

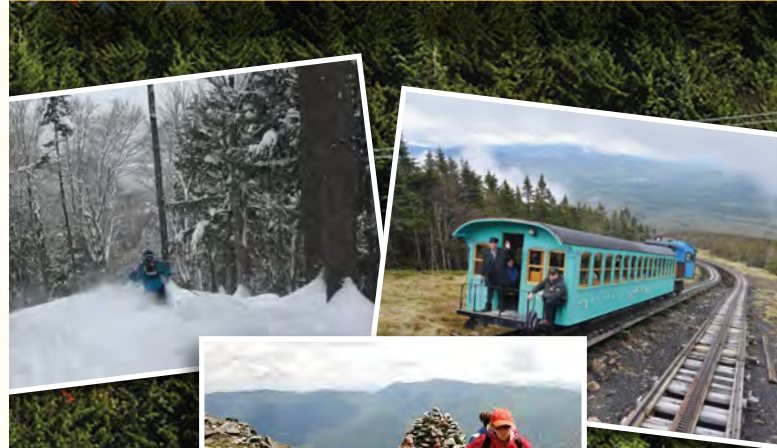
09/20 15K

NEW HAMPSHIRE

MOUNT WASHINGTON TWIN MOUNTAIN BRETTON WOODS



Find Adventure in the White Mountains of New Hampshire



TWINMOUNTAIN.ORG

TWINMOUNTAIN.ORG

Our Natural Beauty Will Invigorate and Inspire You



The Villages of Twin Mountain and Bretton Woods will invigorate, inspire, and refresh you. Our warm, friendly nature and stunning beauty stretch from the towering peaks of the Presidentials to the rushing waters of the Ammonoosuc River. Make memories here that will last a lifetime! Hike or bike our world class trails, or enjoy family fun at any one of the great attractions nearby.

Hitch a ride to the top of Mount Washington on the world's first mountain-climbing railroad, or feel the heart pounding rush of skiing and riding at Bretton Woods, NH's largest ski area. From the acclaimed spa at the Omni Mount Washington Resort to the soothing sounds of a mountain trout stream, you will find it easy to relax and unwind.

Play golf at one of the five challenging courses nearby, or take a breathtaking drive along the White Mountain Trail, a National Scenic Byway. Canoe, horseback ride, zipline down a mountain, bird watch, or photograph our rather elusive moose. In winter, go on a sleigh ride, ice skate, downhill or cross-country ski, snowshoe, or snowmobile on our well-groomed trails.

So, share a smile with one of the locals, we'll be sure to smile back... and enjoy the memories.

Enjoy Family Attractions and Outdoor Activities All Year!



Twin Mountain, nestled in New Hampshire's White Mountains, is conveniently located within 30 minutes of our premier family attractions described below. Other attractions include Santa's Village, Lost River, Whale's Tale Waterpark, Story Land, Cannon Mountain Tramway and Ski Area, and the Flume Gorge.

BRETTON WOODS SKI AREA & ADVENTURE CENTER brettonwoods.com · 800-258-0330

Hit the slopes at NH's largest ski area, or soar above them on the year-round Canopy Tour with 9 zip lines. In the summer, test your climbing and biking skills, hop on an ATV mountain tour, or enjoy scenic gondola rides. Call for seasonal availability.

CLARK'S BEARS clarksbears.com · 603-745-8913

Bear shows, train rides, and Wolfman. Circus shows in July and August. Museums, shops, and more. We can bearly wait to see you! Open Memorial Day – Columbus Day.

HAMMERDOWN ADVENTURES thesnowyardnh.com · 603-444-7694

Whatever the season, enjoy the Ammonoosuc River Rail Trail and the great outdoors. Guided side by side or snowmobile tours for up to 4 hours. Visit our website for prices and call for reservations.

MOUNT WASHINGTON COG RAILWAY thecog.com · 603-278-5404

Journey to the top of New England on the world's FIRST mountain-climbing railroad! Great views, museum, restaurant, and gift shop at the base. Buy tickets online!

MT. WASHINGTON AUTO ROAD mtwashingtonautoroad.com · 603-466-3988

Find adventure at every turn when you drive yourself, or take a guided tour, to the summit of the Northeast's highest peak! During winter, explore the mountain on the Mt. Washington SnowCoach.

THE ROCKS therocks.org · 603-444-6228

An active conservation and education center for the Forest Society in Bethlehem. Enjoy our interpretive trails on foot, snowshoes, or cross country skis, or join us for "maple sugaring" or "harvest your own Christmas tree."

TWIN MOUNTAIN FISH HATCHERY wildlife.state.nh.us

Stop by and see the trout the Fish and Game Department will be stocking in local rivers and ponds.

TWIN MOUNTAIN SNOWMOBILE CLUB twinmtsnowmobile.org

Enjoy the White Mountain area views and trail system. Online trail updates. Visit our website for our club details and to join!

VERTICAL VENTURES AVIATION flyvva.com · 855-435-9882

Enjoy the thrill of a lifetime with Vertical Ventures Aviation. Climb on board our luxurious air conditioned R-44 Helicopter equipped with Bose headsets and take in the breathtaking vistas of the majestic White Mountains.

WHITE MOUNTAINS ATTRACTIONS visitwhitemountains.com · 800-FIND-MTS

17 great attractions for family fun all season long! For information and a FREE Travel Planning Kit call or visit our website.

EVENT HIGHLIGHTS

Events subject to change without notice.

The New Hampshire Maple Experience

March and April • Last 3 weekends in March and the first weekend in April. Help tap a tree, take a horse drawn ride, visit a sugar house, and sample maple syrup and donuts.

NH Lilac Festival – Lisbon, NH

May • Celebrate NH's lilacs with a parade, flea market, vendors, and carnival rides. Fireworks top off the weekend's events.

Memorial Day Parade and BBQ

Join family and friends in an old town Memorial Day Parade and remembrances at the Memorial Bandstand followed by dedication at the cemetery and a BBQ at the fire station.

Cruise Night

Summer • Thursday night Cruise Nights and outdoor movie every other week from June thru Labor Day at Beech Hill Automotive. Call 603-869-2181 for details.

Fields of Lupines

June • See breathtaking carpets of purple, pink, blue, and white lupines against the White Mountains.

Twin Mountain Independence Day Celebration

An old-town celebration at the corner with Fantastic Fireworks at dusk.

Railway to the Moon Steampunk Festival

July • Enjoy costumed Steampunk characters, browse Steampunk vendors and exhibits, and see The Cog's Museum. Visit website for details and more information on this and The Cog's other exciting events. thecog.com

Vintage Market in the Mountains – Wayside Inn

Last weekend in July • Enjoy outdoor festivities including food trucks, live music, beer garden, and a variety of vintage wares and artisan finds! vintagemarketinthemountains.com

Annual Antique, Classic and Mustang Car Show

August • Great cars, several awards, food, and refreshments. At Beech Hill Automotive, 10-2 pm.

All You Can Eat Pancake Breakfast

At the Fire Station. On Saturday of holiday weekends – Independence Day, Labor Day, and Columbus Day.

Lancaster Fair

August/September • Old-fashioned country fair with agriculture activities, midway, 4-H exhibits, music, and motorized competitions. lancasterfair.com

NH Highland Games and Festival

September • Scottish cultural festival with pipe and drum bands, heavyweight Scottish athletics, Celtic music, dance, and more. nhscot.org

Halloween Fun at the Twin Mt. Recreation Center

October • Don your finest Halloween costume and “Trunk or Treat” with Twin Mountain locals on an October Saturday.

Gathering of the Jack-O'-Lanterns

October • Day long community event with trick or treating in costumes on Littleton's Main Street, food trucks, and hundreds of jack-o'-lanterns on the Ammonoosuc River on a Saturday in late October.

Holiday Fun

After Thanksgiving up to Christmas

Weekend Craft Fairs

Harvest Your Own Christmas Tree at The Rocks

Select a freshly cut Christmas tree or harvest your own. Enjoy beautiful views as you participate in a New England tradition. therocks.org

Santa's Village Christmas Weekends

12 great rides, enjoy shows, shopping, and spectacular Christmas lights. Santa is waiting to hear each and every Christmas wish! santasvillage.com

Glenn Miller Orchestra

Get “In the mood for Christmas” with the world famous Glenn Miller Orchestra at the Omni Washington Hotel. brettonwoods.com

Skiing

Mid-November through April • For area skiing and winter events visit: brettonwoods.com • cannonmt.com • twinmountain.org

Par for the Course

Play the fabulous five. Try any of the five great golf courses that our region has to offer. Golfers rave about the area's scenic mountain beauty, lush fairways, and challenging terrain.

Omni Mount Washington Resort. Rt. 302, Bretton Woods, NH, 603-278-GOLF [4653], brettonwoods.com

Bethlehem Country Club. Rt. 302, Bethlehem, NH 603-869-5745, bethlehemccnhgolf.com

Waumbek Golf Club. Rt. 2 115, Jefferson, NH 603-586-7777, playgolfne.com

Maplewood Golf Club. Rt. 302, Bethlehem, NH 877-869-3335, maplewoodgolfresort.com

The Mountain View Grand Resort. Rt. 3, Whitefield, NH, 866-484-3843, mountainviewgrand.com

Stop by for information, WiFi, area maps, and brochures in the gazebo on the hill at the corner of Routes 3 & 302.

Making the Most of the White Mountains...



Hiking

Here you're surrounded by endless hiking opportunities whether you are a novice or an experienced hiker. Here is a list of some of our favorites.

ARETHUSA FALLS 1.3 Miles • 1 Hr. 20 Min.
Approximately 3 miles below Crawford Notch on Rt. 302 East. Great easy hike to NH's highest 200' waterfalls.

RIPLEY FALLS 1 mile • 55 Min. 2 miles below Crawford Notch.

PONDICHERY WILDLIFE REFUGE A Birder's Paradise.
One of the top birding locations in the Northeast, with 234 bird species. Water birds and unusual mammals abound! Access is from a trailhead on Airport Road in Whitefield or from Rt. 115 in Twin Mountain, the start of a 1.5-mile hike to Cherry Pond on the Pondicherry Rail Trail. Just north, a mile-long loop trail to Little Cherry Pond includes 600 feet of boardwalk over a bog.

ARTIST'S BLUFF AND BALD MOUNTAIN 1/2 Mile loop.
A short hike with a big payoff. Just off I-93, exit 34. Begin in the parking area across from Peabody Base Lodge. Stunning view of Franconia Notch and Echo Lake.

ELEPHANT HEAD An easy family hike in Crawford Notch.
Trail starts near the AMC Crawford Depot and takes you to the top of a rock formation resembling an elephant's head with views of Crawford Notch and the Presidentials.

SUGARLOAF (2,526') Sugarloaf Trail, 1.2 Miles • 1 Hr. 30 Min.
Trails starts 1 mile up Zealand Road (south side of Rt. 302 between Twin Mountain and Bretton Woods) at the bridge over Zealand River. Trail splits between Middle and North Sugarloaf. Bear left to Middle Sugarloaf for a better view.

MT. WILLARD (2,804') 1.4 Miles • 1 Hr. 10 Min.
Trail starts in Crawford Notch opposite the old Crawford House Railroad Station near Saco Lake. A spectacular view of the notch.

MT. WASHINGTON (6,288') Jewell Trail 4.6 Miles • 4 Hrs.
Trail begins at the Cog Railway base station. Winding through forest, it works up to the north shoulder of Mt. Washington and to the summit. Cafeteria, gift shop, post office, and museum are at the top.

LAKES OF THE CLOUDS (5,050') Ammonoosuc Ravine Trail 2.5 miles • 2 Hrs. 45 Min.
Trail starts at the Cog Railway Base Station. Following the Ammonoosuc River, it passes the base of the Ammonoosuc Ravine, then the steep trail ascends to the lake. May continue to the summit of Mt. Washington.

Biking

CHERRY MOUNTAIN LOOP Ride to the summit of Mount Martha (3,554'). There are gorgeous waterfalls on this 25 mile, intermediate-level pedal.

BRETTON WOODS is home to mountain bikers in the summer. Enjoy marked single-track rides as well as double-track riding. Their expansive trail network allows for all cycling levels.

WHITE MOUNTAIN NATIONAL FOREST Mountain biking is relatively unrestricted at this time, though bikes are prohibited in wilderness areas and on the Appalachian Trail.

BETHLEHEM features existing trails, with more on the way! Their signature Shoulder Roll Trail is great for all, with a variety of beginner, intermediate, and moderate trails still being built.

AMMONOOSUC RAIL TRAIL (19.5 miles) Littleton (Industrial Rd.) to Woodsville.

FRANCONIA NOTCH BIKE PATH is a well marked trail, gently rolling ride crisscrossing the Pemigewasset River through Franconia Notch to its headwaters at Profile Lake. Seven miles on a paved path in Franconia Notch State Park.



Restaurants

Operating schedules subject to change.

AMC HIGHLAND CENTER at CRAWFORD NOTCH • 603-278-HIKE

Crawford Notch • Enjoy a free evening program along with a hearty meal. An unbeatable location for outdoor fun! Dinner served family style at 6pm (Friday and Saturday buffets from 6-8pm). Breakfast and lunch everyday.

THE OMNI MOUNT WASHINGTON RESORT • 800-258-0330

Bretton Woods • Numerous options from casual to formal: Fabyan's Station, NEW Rosebrook Lodge, Slopeside Pub, Bretton Arms, Stickney's Steak & Chop Pub, Mount Washington Hotel all-new Main Dining Room. On Rt. 302E.

See listing in lodging.

MUNROE'S FAMILY RESTAURANT • 603-846-5542

Twin Mountain • "Down-home Good" cozy family style dining serving breakfast all day and lunch daily with great daily specials. Dinner served Friday and Saturday nights. Kids Menu • Beer and Wine • Take-out available. Rt. 3S and the snowmobile trail.

REK-LIS BREWING CO. • 603-991-2357 • reklibrewing.com

Bethlehem • Offers local brews and a variety of food including a Baja menu, delicious pub food, Sunday brunch, and weekly specials including Pizza and Pint for \$11 on Mondays and Burrito and Beer for \$11 on Thursdays. Enjoy live music, monthly spirit pairings, and more! Stay up to date on Facebook, Instagram, and our website.

ROSA FLAMINGO'S RESTAURANT • 603-869-3111

rosaflyingosrestaurant.com

Bethlehem • A favorite local "eating and drinking establishment" since 1986. Simple Italian favorites, plus the best pizza, wings, and homemade desserts around. Serving dinner nightly at 5pm, and our bar menu 4pm to 11pm. Closed Mondays and Tuesdays. On Rt. 302W in Bethlehem.

THE WAYSIDE INN RESTAURANT • 603-869-3364 • thewaysideinn.com

Bethlehem • Restaurant, lounge and riverside patio with delicious family friendly dining and beautiful views overlooking the river and gardens. Affordable menu with a little something for everyone. Creative seasonal specials all lovingly prepared by our award winning chef. Open for dinner Thursday – Monday. Call for hours and reservations.

YAYA'S MARKET AND DELI • 603-846-5501

[Facebook.com/Yayas-Market-and-Deli-201415487125575](https://www.facebook.com/Yayas-Market-and-Deli-201415487125575)

Twin Mountain • Deli with seating offering full breakfast, breakfast sandwiches, pizzas, and subs. Midweek Specials. Also a full convenience store with groceries, beer, and wine. Gas and ATM. Located next to Post Office on Rt 3N. Call in your order for take out or come on in!

Conveniences

BEECH HILL AUTO • 603-869-2181

Bethlehem • Automotive repair and towing services. Sponsor of Cruise Night and outdoor movie. 4093 Main Street in Bethlehem.

BUMPER TO BUMPER AUTO REPAIR • Rt. 115 • 603-846-0000

btob@roadrunner.com

Twin Mountain • Complete automotive services on all makes and models. Rustproofing, welding, AAA, and towing services. Owner: Jay Ouellette. 273 Rt. 115.

GARNEAU'S GARAGE • 603-846-5790 • garneausgarage.com

Twin Mountain • Ski-Doo sales and service. Complete auto repairs, alignment, utility trailers, parts, and hitches. Wells Cargo trailers. On Rt. 302W.

GEORGE M. STEVENS AND SONS • 603-444-2911 • gms-ins.com

Littleton • Visit our website to view all of our insurance products.

PASSUMPSIC SAVINGS BANK • 603-837-9591 • passumpsicbank.com

Whitefield • Full service community bank. Dedicated to growing prosperity of the communities we serve by supporting charities/projects within the North Country. 20 Jefferson Road, Whitefield, NH.

Specialty Services

BETHLEHEM SOAP COMPANY • 888-695-5455

Bethlehem • A singular collection of handcrafted organic soaps made by artists in Bethlehem, NH using only the finest quality of sustainably-sourced vegetable-based ingredients and essential oils. 100% natural. 100% of the time.

BRETTON WOODS MARKET AND DELI • 603-278-5555

[facebook.com/people/Bretton-WoodsMarketanddeli/100010691719329](https://www.facebook.com/people/Bretton-WoodsMarketanddeli/100010691719329)

Bretton Woods • Under new ownership! Upscale convenience store/gas station. We offer hot fresh daily food specials and baked goods, pizza, and sandwiches using Boars Head products. Hot/Cold beverages, regional and craft beers as well as wine. Located conveniently on Rt. 302E.

THE COLONIAL THEATRE • 603-869-3422

bethlehemcolonialtheatre.org

Bethlehem • Visit the oldest continually running theatre in the US just 7 miles West on Rt. 302. Home of arts, film, music, and culture. World-class music, independent and world cinema, family entertainment. Open May – October. For movies, live shows, and information, visit their website.

Specialty Services (cont.)

DRUMMOND'S MOUNTAIN SHOP • 603-278-SKIS

Bretton Woods • Year round outfitters. Hiking gear, footwear, and rain gear. Bike rentals available May – Oct. Full service ski rental and retail shop. Downhill, cross-country, snowboard rentals. Full line of ski accessories and clothing. Rental discounts offered to all guests of local innkeepers. On Rt. 302 in Bretton Woods.

THE FLOOR WORKS • 603 869-5880 • thefloorworks.com

Bethlehem • We are a family run flooring store offering product and installation for all your residential or commercial needs. We offer carpet, vinyl, laminate, stone, hardwood, tile, area rugs, countertops, and cabinets! Call or stop in our Bethlehem Main Street store.

FOSTER'S CROSSROADS • 603-846-2283

Twin Mountain • Your local general store with beer, wine, grocery, Valero gas, LPG gas refill, gifts, tees and sweats, hardware, NH registrations, fishing licenses, national forest parking passes, restrooms, ATM, and more. On Rt. 3S.

GERALD MARQUIS BUILDING CONTRACTOR • 603-616-9889

Twin Mountain • Building contractor for over forty years and holds a NH Renovation License. Call for information and estimates.

LARCOM STUDIOS • 603-733-6066 • larcomstudios.com

Bethlehem • Offering a unique and creative approach to web and graphic design. Larcom Studios offers photography services as well as packaging design and social media marketing.

LINCOLN SIGN COMPANY • 603-745-6658 • lincolnsign.com

Lincoln • Beautiful, custom, long-lasting signs of all kinds. Famous carved, sandblasted, commercial, personal, award winning designs, banners, vinyl lettering, painted, printed, metal, or wood signs for interior or exterior since 1972.

PEABODY AND SMITH REALTY • 603-259-0210 (Bretton Woods) or 603-823-5700 (Franconia) • peabodysmith.com

We specialize in Northern New Hampshire real estate for residential, commercial, and land. We offer the most comprehensive information on the web.

REXFORD SEPTIC SERVICE • 603-788-4170 • rexfordseptic.com

Lancaster • Dedicated to providing you with complete and comprehensive septic services with a state of the art cleaning system that creates an environment for quality services. Call us today for septic pumping services that will exceed your expectations.

SULLIVAN CREATIVE • 603-228-0836 • sullivancreative.com

Bethlehem • Award winning, full-service marketing agency. We work with all size enterprises to build awareness and generate excitement. With over 30 years in the industry, we know how to become a true partner with our clients and get results.

VINTAGE MARKET IN THE MOUNTAINS • 603-991-0946 vintagemarketinthemountains.com

Bethlehem • A vintage-inspired, flea market style shopping experience. Vintage Market in the Mountains features antiques, art, clothing, home decor, and bespoke treasures. See July events for more info on the Wayside Inn event.

TWIN MOUNTAIN MASSAGE THERAPY at Carlson's Lodge • 603-846-5501

Twin Mountain • Sore after a long day of activities or just want to relax? Experience a deep tissue massage from a licensed massage therapist. Call for an appointment. 330 Rt. 302W.

WREN (the Women's Rural Entrepreneurial Network) 603-869-9736 • wrenworks.org

Bethlehem • Shop and support local artisans or browse our onsite gallery with rotating exhibits. Paintings, pottery, jewelry, home furnishings, and more. Also available are business assistance programs and advice as well as area information.

Lodging

Prefer to stay at a world-class resort? A charming inn perhaps? Here you will find these and fairly priced motels as well as family style cabins. Looking for a secluded campsite or a place to park your RV for the night? You will find our campgrounds and RV parks both friendly and at your service.

ALLEGORY INN • 603-846-8047 • allegoryinn.com

Twin Mountain • Modern updates and views from this well kept, clean, comfortable 7 room inn at 222 US Rt. 3S on the snowmobile trail in the heart of the White Mountains. Near Mt. Washington, the Cog Railway, hiking, skiing, golf, attractions, breweries. Enjoy the shared spaces and kitchenette.

AMC HIGHLAND CENTER • 603-278-4453

Reservations – 603-466-2727 • outdoors.org

Crawford Notch • Four-season lodge and outdoor education center which offers a range of overnight accommodations and outdoor activities.

BRETTON WOODS VACATIONS • 603-389-2121 brettonwoodsvacations.com

Bretton Woods • With unparalleled customer service and over 60 vacation homes, Bretton Woods Vacations can find you the perfect home for your vacation without spending a fortune! We offer both small and large homes from secluded log cabins to stunning ski-in/ski-out condos to lakefront homes, all impeccably clean.

BOULDER MOUNTAIN VIEW • 603-846-5437 bouldermountainview.com

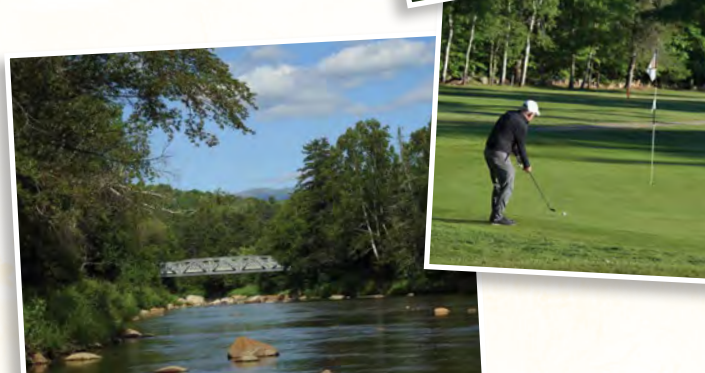
Twin Mountain • Mountain view cottages and new tiny homes on a beautiful property surrounded by woods and wildlife. Fully stocked kitchens with living rooms ready for you to relax. Minutes from hiking, fishing, skiing, and other outdoor adventures. Free WiFi.

CARLSON'S LODGE • 603-846-5501 CarlsonsLodge.com

Twin Mountain • Experience mountain adventures just beyond our doors and then relax by the fire or on our porch and enjoy spectacular views. Homey atmosphere, cozy living room lobbies, game room, outdoor pool, and play area. Light continental breakfast. Free WiFi. Smoke free. Discount tickets. Massage therapy on site. All you need for a great vacation!

CARROLL MOTEL AND COTTAGES 603-846-5553 carrollmotelandcottages.com

Twin Mountain • We offer large cottages with living rooms and kitchens, cozy cottages with screened porch, motel rooms, and suites all with a theme and antique charm. Heated pool, large playground, CCTV, AC, free WiFi, fire pits, and relaxation. "View and choose" your lodging online. Discount ski tickets for Bretton Woods and golf discounts. Direct snowmobile trail access.



Lodging (cont.)

FRANCONIA NOTCH VACATIONS • 603-823-2112
visitfranconianotch.com

Franconia • Professionally managed seasonal vacation rentals. Mountain country homes all central to NH's western White Mountains.

FOUR SEASONS MOTOR INN • 800-228-5708 or 603-846-5708
4seasonsmotorinn.com

Twin Mountain • Non-smoking rooms, great views, game room, pool, a.m. coffee, and free WiFi. Hike, bike, golf, ski, and snowmobile. Attractions surround us. Story Land, the Cog Railway, and Santa's Village. You can relax here!

JOHNSON'S MOTEL AND COTTAGES • 603-846-5561
johnsonsmotel.com

Twin Mountain • Pet friendly with views of the White Mountains. Near White Mountains Attractions. Cottages with kitchenettes or with full dining and living area, 5 BR house with 2½ baths. Free WiFi. Enjoy a nice nature walk on Richie's Trail with your pet. \$10 daily fee per pet.

PATIO MOTOR COURT • 800-22PATIO or 603-846-5515
thepatio.com

Twin Mountain • Cozy, clean, newly remodeled, 1 and 2 room cabins, carport, kitchenette, full bath, new A/C and heat, swimming pool, free WiFi, near area attractions.

PROFILE DELUXE MOTEL • 800-682-7222 or 603-846-5522
profiledeluxe.com

Twin Mountain • Enjoy the unique personal service, comfort, and ambiance of our family owned and operated motel. You'll feel at home with us! Check us out on TripAdvisor. Outdoor pool, children's scavenger hunt! Free WiFi.

THE OMNI MOUNT WASHINGTON RESORT • 800-258-0330
brettonwoods.com/lodging

Bretton Woods • Home to New Hampshire's largest ski area, the Omni Mount Washington Resort is a National Historic Landmark and offers a tradition of gracious and endless recreational pursuits including alpine and nordic skiing, full service spa, year-round canopy tour, golf, and much more. Grand Hotel, Inn, Lodge, and Townhomes.

THE WAYSIDE INN AND RESTAURANT
603-869-3364 • thewaysideinn.com

Bethlehem • A true New England country inn by the beautiful Ammonoosuc River. Fourteen spacious rooms in the Inn with private baths, WiFi, and AC. 12 rooms in the annex with balconies, private baths, TV, WiFi, and AC. Restaurant and lounge with river views. Open for dinner Thursday – Monday.

TWIN MOUNTAIN MOTOR COURT AND RV PARK
603-846-5574 • tmmcrv.com

Twin Mountain • Clean and cozy, 1 to 3 room cottages, most with kitchens. We provide all linens and cooking utensils, cable TV, WiFi, and AC is available. We have large 50x50, T-Shaped pool, community room, laundromat, and playground. Full hookup RV Park with panoramic mountain views.

Campgrounds

ALONG THE RIVER CAMPGROUND AND CABINS
603-846-1026 • alongtheriverNH.com

Twin Mountain • Clean, quiet, friendly, pet loving campground, on the Ammonoosuc River, in the heart of the White Mountains. Welcoming Cabin Lovers, RV, Tents, and Seasonal Guests. WiFi, inground pool, river, hot free showers May – Oct. Winter camping November – April.

AMMONOOSUC CAMPGROUND
603-846-5527 • ammonoosuccampground.com

Twin Mountain • Quiet wooded family campground where you want to be in the White Mountains...CLOSE to everything! Large sites, WiFi, free hot showers, pool, and outdoor activities. Rates: \$29 and up.

BEECH HILL CAMPGROUND AND CABINS
603-846-5521 • beechhill.com

Twin Mountain • Great family oriented campground. Large wooded sites, 30/50 amp 3 way hookup sites with cable, campstore, cabin rentals. WiFi, playground, heated indoor pool, LP gas, laundry. Free hot showers. No pets in cabins.

LIVING WATER CAMPGROUND • 603 846-5513
livingwatercampground.com

Twin Mountain • Offering picturesque campsites on the Ammonoosuc River for tents, travel trailers, and RVs along with two camping cabins and two lodge cabins. On site Pizzeria and Trading Post! Experience the difference!

TWIN MOUNTAIN/MT. WASHINGTON KOA • 800-562-9117 or
603-846-5559 • twinmountainkoa.com

Twin Mountain • We are a full service facility with Kabins, Kottages, Big Rig 50 amp pull-thru sites, and wooded tent sites.

